



World Vision®



Tanzania

THRIVE BUSINESS PLAN

ECONOMIC EMPOWERMENT

Incomes nearly
10X
original incomes

Reaching the
poorest
of the poor in
10 countries

SUMMARY

In 2021, an independent study of World Vision's proprietary livelihoods model Transforming Household Resilience in Vulnerable Environments (THRIVE) in Tanzania revealed **game-changing results**. Parents in extreme poverty—even the poorest of the poor living on as little as 38 cents a day—were equipped to lift their families out of poverty, with **incomes nearly 10X higher** than at the beginning of the program.

Now, in partnership with VisionFund International, we are launching an 8-year scale-up plan to **reach everyone, everywhere**. **World Vision works in 10 countries** with the most effective THRIVE interventions and a focus on women and the well-being of children. Through an investment of \$285 million, **10 million people will be equipped with the tools they need to lift themselves out of extreme poverty.**



Guatemala

OUR PLAN FOR 10 COUNTRIES

Everyone, everywhere we work, has the tools they need to lift themselves out of extreme poverty by 2030.

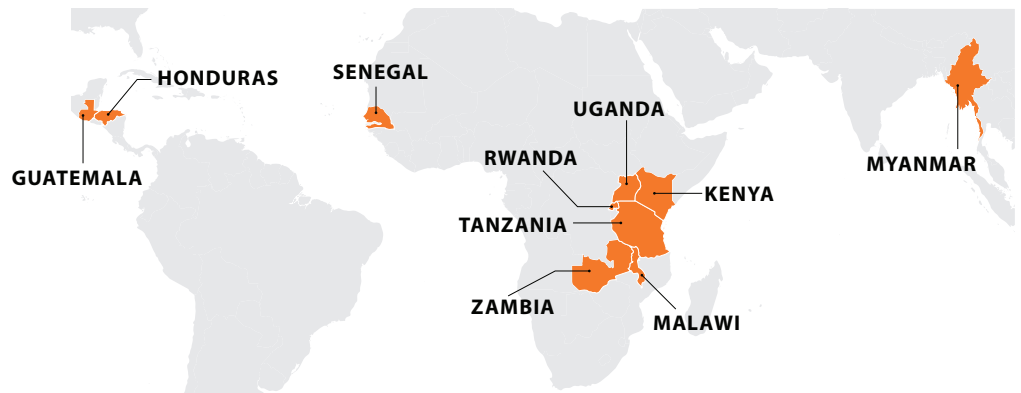
Where and who

The 10 countries in our business plan were selected based on a high percentage of people still living in extreme poverty within our operating areas, commitment from the targeted field offices and alignment to their strategy, and the presence of a VisionFund microfinance institution.

10 MILLION PEOPLE

equipped with the tools they need to **lift themselves out of extreme poverty**

10 COUNTRIES



Our vision for every child, life in all its fullness.

Our prayer for every heart, the will to make it so.

As a child-focused organization, World Vision is committed to helping parents who face the nearly impossible responsibility of providing well for their children on less than \$1.90 per day. By building improved and resilient incomes, parents generate the resources to feed, shelter, educate, and care for their children.



DIGITIZATION OF FINANCIAL SERVICES

The business plan also includes a \$15 million investment in the digitization of VisionFund systems and processes, as well as Savings for Transformation groups and farmer producer groups. This will enable us to sustainably scale and reach more of the most vulnerable rural poor.



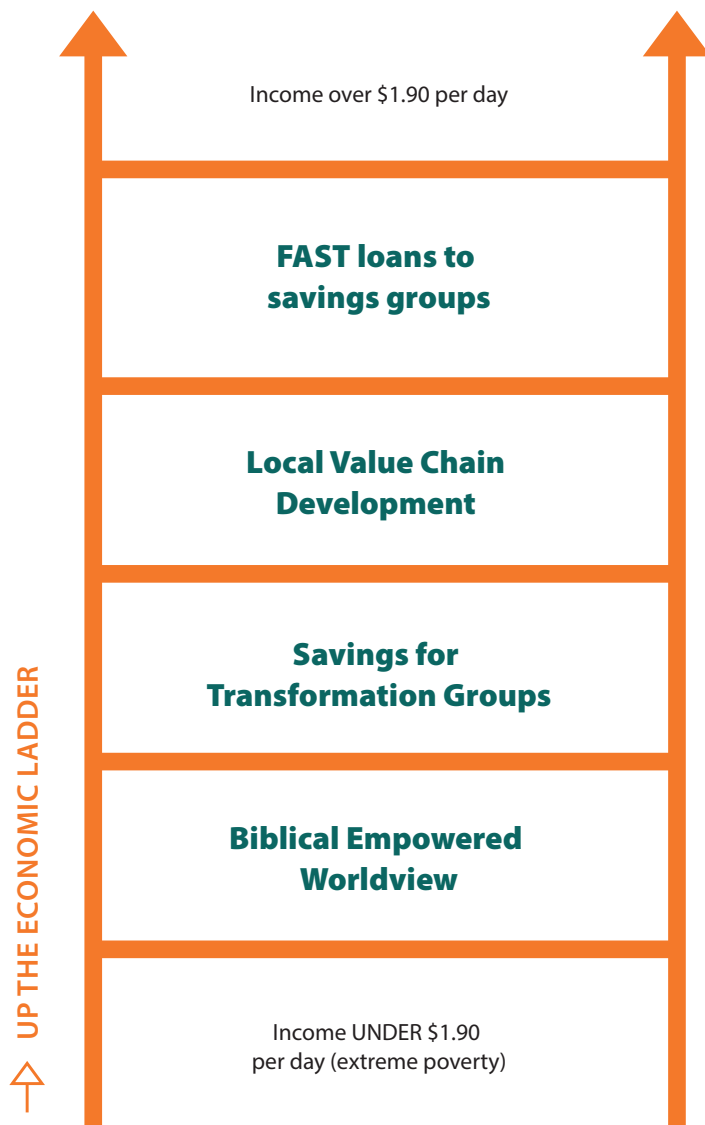
Tanzania

THE APPROACH

Deliver targeted, evidence-based interventions that help households and communities build improved, resilient, and sustainable livelihoods for the well-being of their children.

What and how

A package of evidence-based interventions focused on mindset change, collective action, financial inclusion, and value-chain development will lay a foundation to empower families to progress up the economic ladder.



Finance Accelerating Savings group Transformation (FAST)

FAST loans to mature savings groups provide additional capital enabling members to take loans for business opportunities. This results in higher household incomes for members and higher savings for the group—usually an increase of 40-60%.

Local Value Chain Development

This project model helps farmers and entrepreneurs increase their incomes by working together in groups to better understand and connect to markets, thereby increasing their profitability.

Savings for Transformation (S4T) Groups

Savings groups enable community members—often women—to gain basic financial knowledge, including how to save and pool their money, borrow money, pay back loans, and make financial decisions.

Biblical Empowered Worldview

This powerful curriculum is the foundation of THRIVE. It builds confidence, shifts mindsets, and promotes a biblically based view of identity, responsibility, and accountability.

KEY TARGETS

- 144,500 savings groups supported in 10 countries
- 80% of participants benefiting from savings groups and FAST loans to savings groups are women



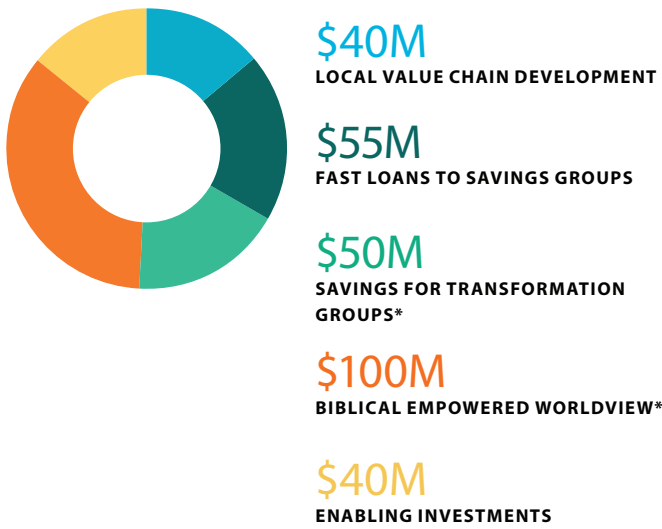
THE GOAL

The poorest households have substantially higher incomes and resilient, sustainable livelihoods to provide well for their children.

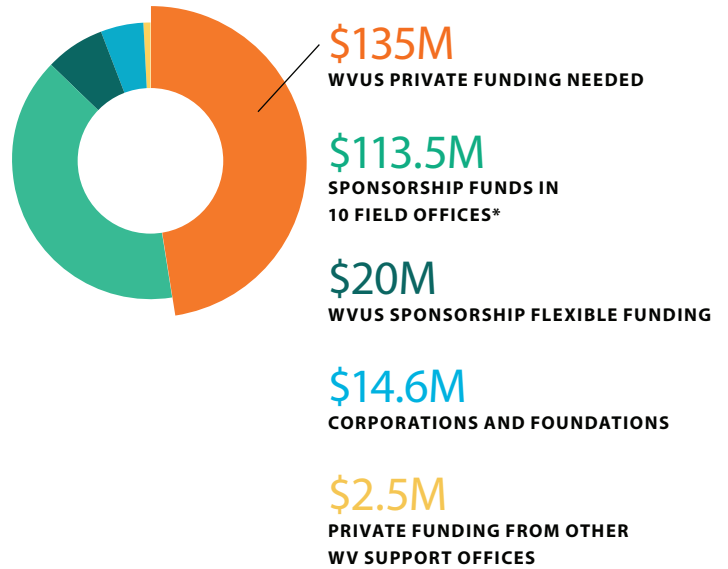
Estimated cost and funding sources

We are seeking **\$135 million in new private cash donations** to achieve our business plan targets to deliver proven interventions in 10 countries—empowering 10 million women, men, and children to lift themselves out of extreme poverty.

COST BREAKDOWN
Estimated



FUNDING BREAKDOWN
Estimated



**Cost covered by 10 participating Field Offices*



CAPACITY BUILDING, MONITORING, AND EVALUATION

Other key components of the business plan include an investment in staff and partner capacity building, strengthening household monitoring and management information systems, and ensuring a robust evidence, learning, adaptation, and innovation agenda.



“World Vision is leading its peers in applying this type of rigor to their programs. Others don’t and miss the impact and evidence needed.”

—BRUCE RAVESLOOT, VICE PRESIDENT
TANGO INTERNATIONAL

Why World Vision

World Vision’s combination of scale, proven technical expertise, child focus, and a biblical foundation for our work uniquely positions us to empower millions of the poorest families on the planet to lift themselves out of extreme poverty.

Christ-centered. We follow Jesus’ example to care for those in greatest need, and demonstrate our faith through our actions here and in every community we work with around the world..

Community-empowering. We build long-term relationships, empowering communities to set their own goals and equipping them to sustain progress over time.

Committed to gender equality and social inclusion. As a leader in equality and inclusion work, World Vision prioritizes women, girls, and people with disabilities in program design, monitoring, and evaluation.

Driven by impact. We earn the trust of our donors and partners by delivering on our commitments—to them and the vulnerable communities we serve globally.

Dedicated to evidence, learning, adaptation, and innovation. Measuring progress and learning from our programming work is an essential part of our accountability to the communities we serve, our partners, and our donors. We partner with learning institutions to gather and analyze data—specifically to support evidence-based, scalable solutions that have been documented to reduce poverty.

Research partners include:



60 _ decibels





Myanmar

“Creating environments for rightful relationships between girls and boys and women and men is the path to long-term, sustainable change that will end extreme poverty.”

—EDGAR SANDOVAL, PRESIDENT/CEO
WORLD VISION US

Learn more

NEW PERSPECTIVE, NEW POSSIBILITIES:
The Empowered Worldview curriculum

The THRIVE model is a comprehensive approach that intentionally combines mutually reinforcing interventions to address root causes of the household-level material need. Empowered Worldview is the foundation for the model and is a key element of the parenting THRIVE model in the region and personally Empowered Worldview then empowers caregivers' motivation to address material change in a way consistent with the best of economic development.

Why is worldview so important?

When we begin working in a community, a common challenge to the predominant worldview—how people see and interpret their world, in some places, generations of poverty and oppression have caused people to believe they can't change their situation to better prosper. They need a change in belief that God has no active presence in the world.

A biblically based worldview, in contrast, sees people's value and potential through God's Word & their own desire to be who God created them to be. A change not only how they interpret the world, but also how they perceive their own ability to influence their circumstances to make them to see other people the same way—empowering them to take action to help others as well as themselves. And it affirms that advancement comes from people being empowered instead of being an external intervention. We call this an empowered worldview: an understanding and acknowledgment that we are created in the image of God and are made to participate in what God is doing in the world, using our God-given gifts and resources for the good of others.

—Brad Rowland, Vice President
National Director of Non-Governmental Organizations (NGO) Development



Scan code or [click here](#) to learn more about Biblical Empowered Worldview training

World Vision's THRIVE model
Transforming Household Resilience in Vulnerable Environments

INDEPENDENT STUDY OF PROGRAM EFFICACY
KEY FINDINGS BY TANGO INTERNATIONAL

NEW STUDY REVEALS GAME-CHANGING IMPACT

As an organization committed to stewardship, World Vision commissioned an industry-leading researcher, TANGO International, to evaluate the performance and impact of its proprietary livelihoods model, Transforming Household Resilience in Vulnerable Environments (THRIVE).

The seven-year study targeted Tanzania, the first of five countries to complete a full THRIVE cycle in 2020. THRIVE Tanzania was a \$12 million program directly targeting 3,000 smallholder farmer households in three areas: Maguaga and Garowa in the Manyara region and Kanga in the Arusha region.

The overarching goal of THRIVE is to equip families to lift themselves out of poverty through building improved and resilient livelihoods that enable significantly better incomes, food security, and child well-being.

The study revealed that THRIVE delivered on promises and drove significant impact across all key measures.

"I have to say that World Vision is leading to positive results in the provision of applying this type of rigor to these programs. Others don't receive this type of rigorous study and have the impact and evidence needed."

—Brad Rowland, Vice President, TANGO International



Scan code or [click here](#) to read a summary of the 2021 independent study on THRIVE Tanzania by TANGO International

For more information about this opportunity, please contact:
Christopher Shore, Chief Development Officer,
Economic Empowerment, World Vision U.S
cshore@worldvision.org



World Vision is a Christian humanitarian organization dedicated to working with children, families, and their communities worldwide to reach their full potential by tackling the causes of poverty and injustice. We serve all people, regardless of religion, race, ethnicity, or gender.